

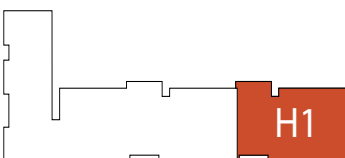
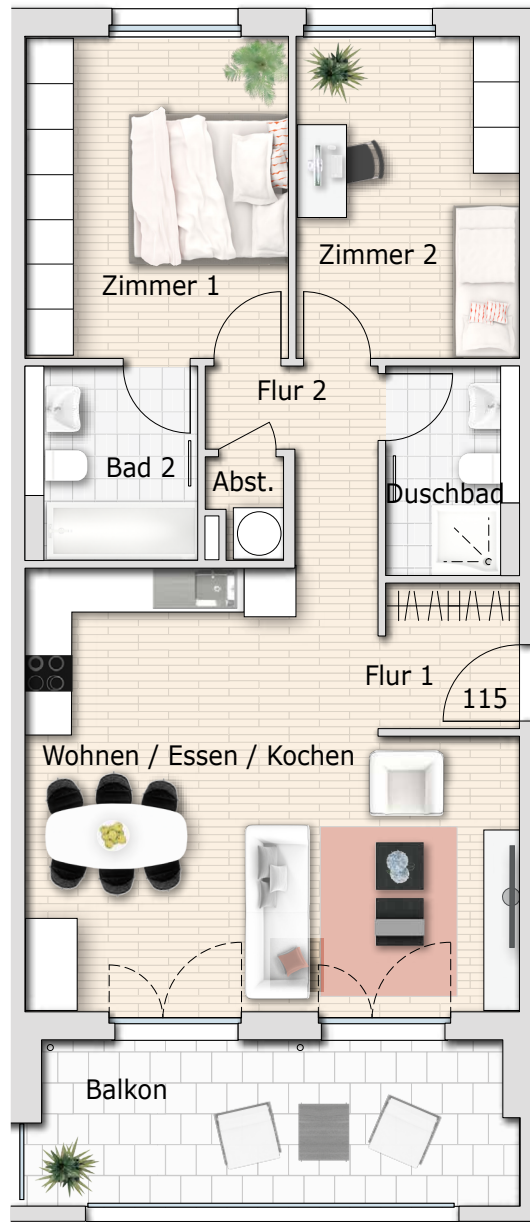
WOHNUNG 115

Haus 1

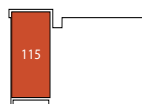
3 Zimmer

4. Obergeschoss

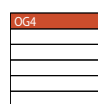
Wohnfläche	m ²
Wohnen/Essen/Kochen	34,02
Zimmer 1	14,77
Zimmer 2	12,52
Duschbad	4,30
Bad 2	5,51
Abstellraum	1,20
Flur 1	3,56
Flur 2	4,24
Balkon (50%)	7,22
Gesamt	87,34



Gesamtübersicht



Lage im OG4



Geschoss