

# WOHNUNG 204

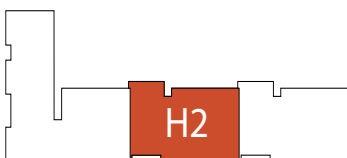
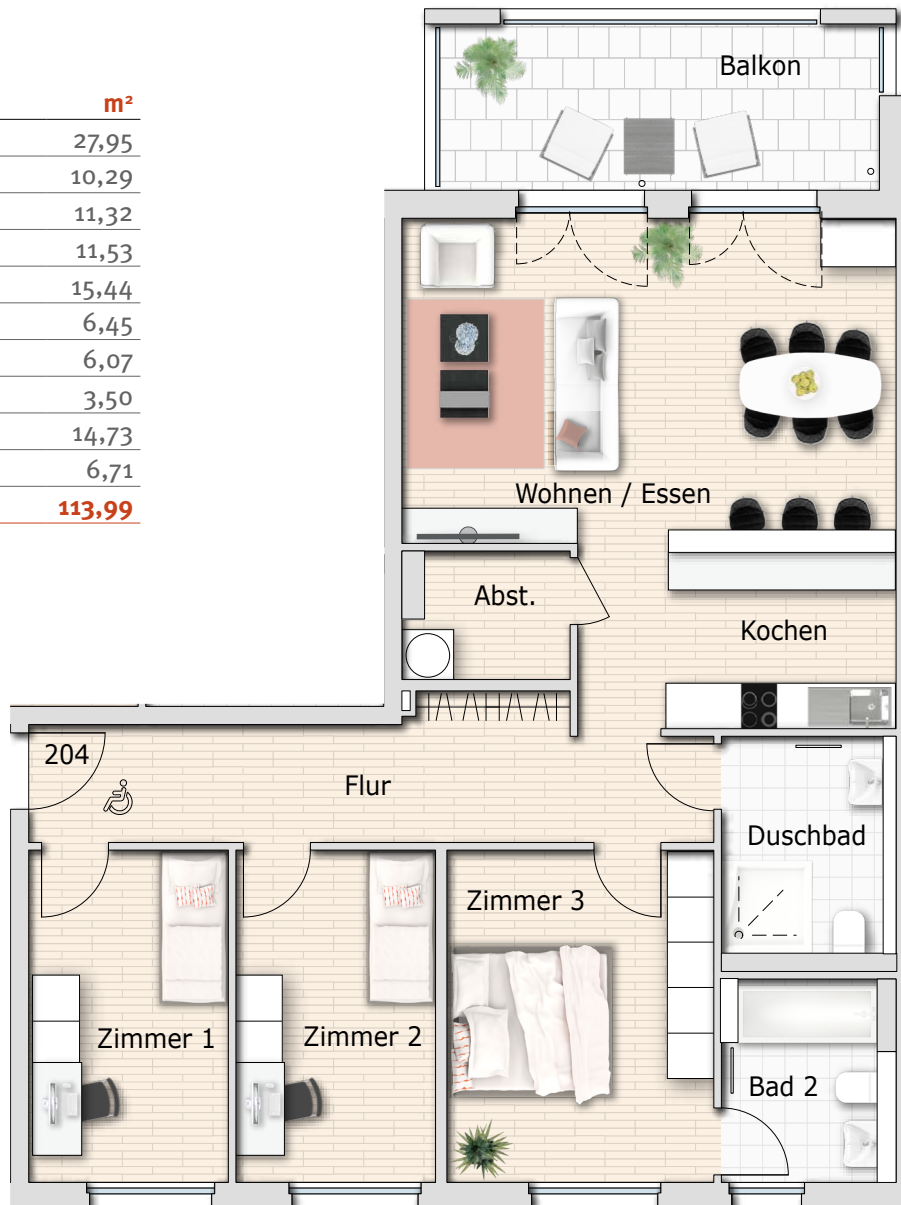
Barrierefrei i. S. §35 LBO Baden-Württemberg

Haus 2

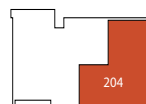
4 Zimmer

1. Obergeschoss

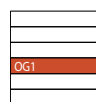
Wohnfläche	m <sup>2</sup>
Wohnen/Essen	27,95
Kochen	10,29
Zimmer 1	11,32
Zimmer 2	11,53
Zimmer 3	15,44
Duschbad	6,45
Bad 2	6,07
Abstellraum	3,50
Flur	14,73
Balkon (50%)	6,71
<b>Gesamt</b>	<b>113,99</b>



Gesamtübersicht



Lage im OG1



Geschoss