

WOHNUNG 308

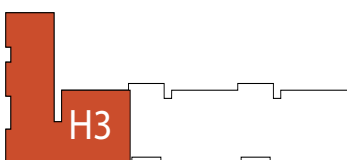
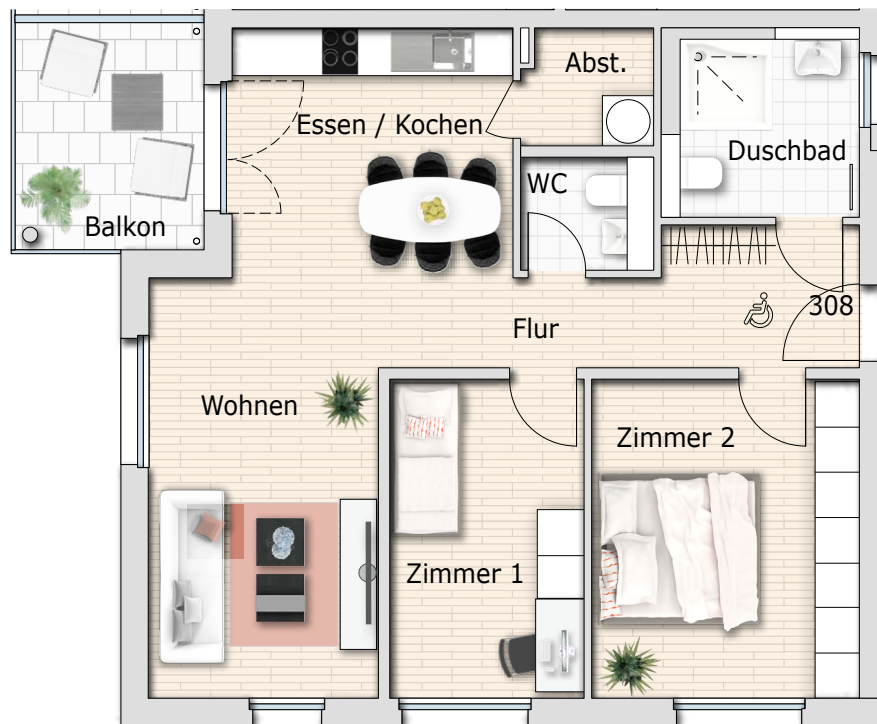
Barrierefrei i. S. §35 LBO Baden-Württemberg

Haus 3

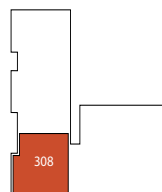
3 Zimmer

1. Obergeschoss

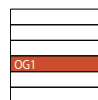
Wohnfläche	m ²
Wohnen	15,58
Essen/Kochen	15,46
Zimmer 1	10,78
Zimmer 2	14,82
Duschbad	5,84
WC	2,02
Abstellraum	2,63
Flur	7,22
Balkon (50%)	3,91
Gesamt	78,26



Gesamtübersicht



Lage im OG1



Geschoss